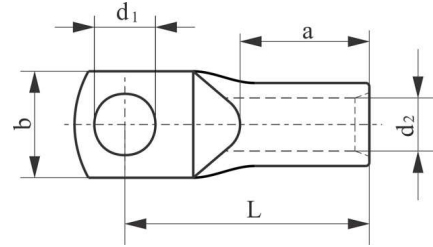


Tubular cable lugs-Ringtype- DIN 46235


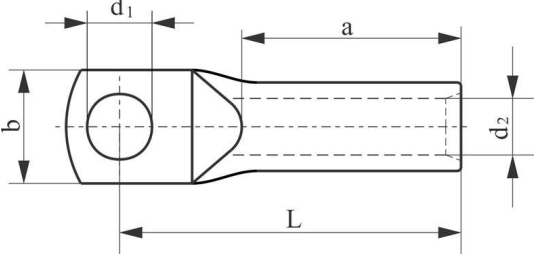
Material: E-Cu

Protection: tin-plated

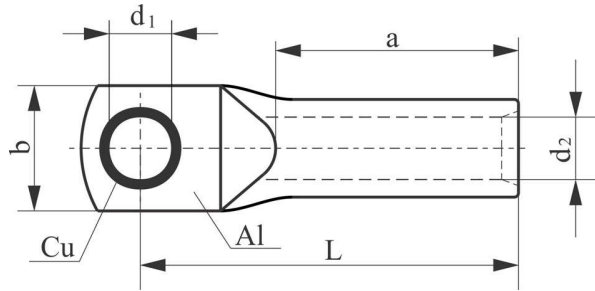


Mark	Cross section of conductor mm ²	Measure mm-mm ²	d ₁ mm	d ₂ mm	b mm	L mm	a mm	Packaging pieces																																																																																																																																																																											
5501	6	5-6	5.3	3.8	8.5	24	10	50																																																																																																																																																																											
5502		6-6	6.4						5503	10	5-10	5.3	4.5	9	27	10	50	5504	6-10	6.4	9	55041	8-10	8.4		5505	16	6-16	6.4	5.5	13	36	20	50	5506	8-16	8.4	13	5507	10-16	10.5	17	5508	25	6-25	6.4	7.0	14	38	20	50	5509	8-25	8.4	16	5510	10-25	10.5	17	552111	8-25-90°	8.4	16	5511	35	8-35	8.4	8.2	17	42	20	50	5512	10-35	10.5	19	5513	12-35	12	21	5514	50	8-50	8.4	10.0	20	52	28	25	5515	10-50	10.5	22	5516	12-50	13	24	5517	16-50	17	28	5518	70	8-70	8.4	11.5	24	55	28	25	5519	10-70	10.5	24	5520	12-70	13	24	5521	16-70	17	30	5522	95	8-95	8.4	13.5	28	65	35	10	5523	10-95	10.5	28	5524	12-95	13	28	5525	16-95	17	32	5526	120	10-120	10.5	15.5	32	70	35	10	5527	12-120	13	32	5528	16-120	17	32	5529	20-120	21	38	5530	150	10-150	10.5	17.0	34	78	35	10	5531	12-150	13	34	5532	16-150
5503	10	5-10	5.3	4.5	9	27	10	50																																																																																																																																																																											
5504		6-10	6.4		9																																																																																																																																																																														
55041		8-10	8.4																																																																																																																																																																																
5505	16	6-16	6.4	5.5	13	36	20	50																																																																																																																																																																											
5506		8-16	8.4		13																																																																																																																																																																														
5507		10-16	10.5		17																																																																																																																																																																														
5508	25	6-25	6.4	7.0	14	38	20	50																																																																																																																																																																											
5509		8-25	8.4		16																																																																																																																																																																														
5510		10-25	10.5		17																																																																																																																																																																														
552111		8-25-90°	8.4		16																																																																																																																																																																														
5511	35	8-35	8.4	8.2	17	42	20	50																																																																																																																																																																											
5512		10-35	10.5		19																																																																																																																																																																														
5513		12-35	12		21																																																																																																																																																																														
5514	50	8-50	8.4	10.0	20	52	28	25																																																																																																																																																																											
5515		10-50	10.5		22																																																																																																																																																																														
5516		12-50	13		24																																																																																																																																																																														
5517		16-50	17		28																																																																																																																																																																														
5518	70	8-70	8.4	11.5	24	55	28	25																																																																																																																																																																											
5519		10-70	10.5		24																																																																																																																																																																														
5520		12-70	13		24																																																																																																																																																																														
5521		16-70	17		30																																																																																																																																																																														
5522	95	8-95	8.4	13.5	28	65	35	10																																																																																																																																																																											
5523		10-95	10.5		28																																																																																																																																																																														
5524		12-95	13		28																																																																																																																																																																														
5525		16-95	17		32																																																																																																																																																																														
5526	120	10-120	10.5	15.5	32	70	35	10																																																																																																																																																																											
5527		12-120	13		32																																																																																																																																																																														
5528		16-120	17		32																																																																																																																																																																														
5529		20-120	21		38																																																																																																																																																																														
5530	150	10-150	10.5	17.0	34	78	35	10																																																																																																																																																																											
5531		12-150	13		34																																																																																																																																																																														
5532		16-150	17		34																																																																																																																																																																														
5533		20-150	21		40																																																																																																																																																																														

5534	185	10-185	10.5	19.0	37	82	40	10
5535		12-185	13		37			
5536		16-185	17		37			
5537		20-185	21		40			
5538	240	10-240	10.5	21.5	42	92	40	10
5539		12-240	13		42			
55391		14-240	15		42			
5540		16-240	17		42			
5541		20-240	21		45			
5542	300	12-300	13	24.5	48	100	50	10
5543		16-300	17		48			
5544		20-300	21		48			

Al tubular cable lugs Material: Al								
								
Mark	Cross section of conductor mm ²	Measure mm-mm ²	d ₁ mm	d ₂ mm	b mm	L mm	a mm	Packaging pieces
4200	16	8-16	8.4	5.6	17	47.5	26	50
4201		10-16	10.5		18			
4202	25	8-25	8.4	6.8	18	56	34	50
4203		10-25	10.5					
4204	35	8-35	8.4	8.0	20	69	40	50
4205		10-35	10.5					
42051		12-35	13.0					
4206	50	10-50	10.5	9.6	21	72	42	25
4207		12-50	13.0					
4208	70	10-70	10.5	11.0	24	82	50	25
4209		12-70	13.0					
4210	95	10-95	10.5	14.0	27	89	55	10
4211		12-95	13.0					
4212		16-95	17.0					
4213	120	10-120	10.5	14.7	31	91	55	10
4214		12-120	13.0					
4215		16-120	17.0					
4216	150	10-150	10.5	16.9	35	103	65	10
4217		12-150	13.0					
4218		16-150	17.0					
4219		20-150	21.0					
4220	185	12-185	13.0	18.0	38	103	65	10
4221		16-185	17.0					
4222		20-185	21.0					
4223	240	12-240	13.0	22.0	45	112	70	10
4224		16-240	17.0					
4225		20-240	21.0					

Al-Cu tubular cable lugs
Material: Al, E-Cu



Mark	Cross section of conductor mm ²	Measure mm-mm ²	d ₁ mm	d ₂ mm	b mm	L mm	a mm	Packaging pieces
4100	16	8-16	8.4	5.6	17	47.5	26	50
4101		10-16	10.5		18.5			
4102	25	8-25	8.4	6.8	18	56	34	50
4103		10-25	10.5		19.5			
4104	35	8-35	8.4	8.0	20	69	40	50
4105		10-35	10.5		20.5			
41051		12-35	13.0		21			
4106	50	10-50	10.5	9.6	20	72	42	25
4107		12-50	13.0		22			
4108	70	10-70	10.5	11.0	24.5	82	50	25
4109		12-70	13.0					
4110	95	10-95	10.5	14.0	28	89	55	10
4111		12-95	13.0					
4112	120	12-120	13.0	14.7	31	91	55	10
4113		16-120	17.0					
4114	150	12-150	13.0	16.9	35	103	65	10
4115		16-150	17.0					
4116		20-150	21.0					
4117	185	12-185	13.0	18.0	38	103	65	10
4118		16-185	17.0					
4119		20-185	21.0					
4120	240	12-240	13.0	22.0	45	112	70	10
4121		16-240	17.0					
4122		20-240	21.0					